

Sacramento Chess Club Newsletter

April 2003 - August 2003

P R N B K Q B N R P

President - Steve Bickford Vice-President - Bob Baker Treasurer - John M^cCumiskey

The Sacramento Chess Club meets every Wednesday evening between 5:30 and 10 PM at the Hart Senior Center, 915 27th Street between I and J Streets, mid-town Sacramento. We are a USCF affiliate and charge no dues. Everyone of all ages and playing strength is welcome! The Club's website is located at <http://webs.lanset.com/jmclmc/default.htm>

1st Annual Williams Gambit Thematic

Thanks to the generosity of Denice Yagi, the club will be hosting the 1st Annual Williams Gambit Thematic Tournament with a guaranteed prize fund of \$500. The tournament has been established to honor Denice's father, William L Willams of Auburn.

The Williams Gambit, 1. f4 d5 2. e4 dxe4 3. **N**c3, has been played in correspondence chess at a national level through APCT and internationally through ICCF. This **unrated** 6 round swiss will be held August 20 and 27 at the chess club.

Details: Entry Fee: \$5. Time controls: G/30 or G/25, TD/5. Registration on 8/13 all evening, 8/20 from 6:15 to 6:40. Three sections: 2000+, 1600-1999, U1600 (August 2003 rating supplement. Players may not play up – unrated players may play in any section). Guaranteed prizes:

2000+ 1st Place, \$85 & trophy; 2nd Place, \$60;

1st U2200*, \$40.

1600-1999 1st Place, \$85 & trophy; 2nd Place, \$60;

1st U1800*, \$40.

U1600 1st Place, \$85 & trophy; 2nd Place, \$60;

1st U1400*, \$40.

Players must keep score and turn in their scoresheets in order to be eligible for prizes. Unrated players may not win asterisked prizes.

All games will start with the mandatory move order 1. f4 d5 2. e4 dxe4 3. **N**c3. Registration will close at 6:40 on August 20 in order to start round 1 on time. Late entrants will either be given a ½ point bye or paired with another late entrant at the TD's discretion. Players may take a maximum of two ½ point byes in the event. Prizes will be awarded on September 3 at 6:45 pm by William L Williams.

For questions on this event, contact John M^cCumiskey, 428-5532 or jmclmc@lanset.com.

Club Shirts

The Club still has polo style shirts with the club logo on them for sale. We have small, medium, large. The shirts do not appear to shrink much. Shirts run \$15. If you would like to purchase one, contact John McCumiskey, 428-5532, or by e-mail at jmclmc@lanset.com.

Club E-mail List & Electronic Newsletter

The Sacramento Chess Club has an e-mail list through Topica.com. To join the list, send an e-mail to Sacto_Chess_Club-subscribe@topica.com An automated message requesting confirmation of your subscription to the list will be sent to you. Follow the confirmation instructions and you're all set! Once you've subscribed, you can send messages to the list at Sacto_Chess_Club@topica.com

The Club will also be posting a copy of the Sacramento Chess Club Newsletter, which included tournament flyers, in PDF format on the club website's newsletter section. So far, approximately 80 people have decided to receive notification when the newsletter is posted. Adobe Acrobat Reader will be needed to view and print the newsletter ... a link to the Adobe website is provided on the club newsletter page. It is possible that the on-line version of the newsletter may have additional material not included in the version of the newsletter sent by mail.

K Q q k

Schedule of Events

2-5>4-2 Sacramento Chess Club Team Championship. Continuing event.

4-9 Spring Blitz. Unrated 8 round Game 5 blitz tournament. Entry fee \$2. Registration 6:45-7:15, round 1 at 7:25. If there is enough interest, a scholastic section may be formed. This event **WILL NOT** be USCF rated.

4-16 Game 29 Quads. Four person round-robin quads, Game 29. USCF Quick Chess Rated, \$5 entry fee. Registration 6:30-6:55. Games start at 7:00. Quads will be ratings balanced – three games with similarly rated opponents! Each section will have its own prize fund. Scholastic quads may be formed as needed.

4-23>5-21 SCC Spring Swiss. 5 Round G/75 USCF rated, entry fee \$5. Early Registration 3-27; 4-3 registration from 6:45-7:10. Round 1 at 7:20 pm, subsequent rounds at 7:15 pm. Trophy to the champion, top 1500-1799, and under 1500 (including unrated). Standard USCF tie-breaks will be used.

5-24>5-26 2nd Annual Koltanowski Memorial. See the flyer on page 5 of this newsletter.

5-28 Swap Night Quick Chess (Handicapped Times). 6 round Quick Chess tournament. Time controls are based on the difference in players' quick chess ratings. \$2 entry fee. Registration from 6:45-7:15. Games start at 7:30. This event **WILL NOT** be USCF rated. These events have been entertaining in the past and EVERYONE has a chance to win a portion of the small prize fund!

5-28 9th Annual Swap Night. Buy, sell, or trade books, sets, clocks, magazines or other chess memorabilia. Stewart Katz is still on the lookout for your old clocks! For the best selection, get there early!

6-4 G/29 Quads. Four person round-robin quads, Game 29. USCF Quick Chess Rated, \$5 entry fee. Registration 6:30-6:55. Games start at

7:00. Quads will be ratings balanced – three games with similarly rated opponents! Each section will have its own prize fund. Scholastic quads may be formed as needed.

6-11 G/5 Double Blitz. Unrated 4 round Game 5 double blitz tournament. Play both white and black against the same opponent. Entry fee \$2. Registration 6:45-7:15, round 1 at 7:25. If there is enough interest, a scholastic section may be formed. This event **WILL NOT** be USCF rated.

6-18 >6-25 Sacramento City Chess Club Junior Championship. Four round Swiss (or round-robin, depending on entries) for those under the age of 19, Game 30, with two games each night. **NO ENTRY FEE.** A rated (for USCF members) and unrated section are planned. If there are not enough entries to run two sections, they will be combined into 1 unrated section. Registration 6:15-6:40. Rounds at 6:50 and 8 PM each night – participants will be finished by 9 PM both nights. Trophy prizes to be awarded with standard USCF tie-breaks used to determine final standings where necessary.

6-18 >6-25 G/45 Summer Swiss. Four round Swiss, G/45, USCF rated, entry fee \$5. Registration 6:15-6:40. Rounds at 6:50 and 8:25 PM each night. Trophy to the champion, top 1500-1799, and under 1500 (including unrated). Standard USCF tie-breaks will be used.

6-22 St. Albans Scholastic. See the flyer on page 3 of this newsletter.

7-2 Sacramento Chess Club Speed Chess Championship Qualifying. The Sacramento Chess Club 5 minute championship. Trophy or prize to the champion. 9 round swiss with the **top nine scores advancing to the finals** on July 16th. Defending champion Kenan Zildiz is seeded into the final. Unrated, \$3 entry fee. Registration 6:30-7:10, Round 1 at 7:15.

(Continued on page 4)

K Q q k

Sacramento Chess Club Newsletter, April 2003 - August 2003

P R N B K Q B N R P

2003 St. Alban's Scholastic, June 21, 2003

EVENT: K - 3rd Grade, K - 6th Grade, K - 8th Grade, & K - 12th Grade sections. A team event will be held in each section (a team is a minimum of two students from a school/club in a section, minimum 1 team per event). All players must be current members of the United States Chess Federation (USCF). Non-members may join when they enter. The event will be run according to the USCF rule book and any modifications made for scholastic competition. (A players grade level will be determined by the school year just completed.)

LOCATION: St. Alban's Country Day School, 2312 Vernon Ave., Roseville, CA Directions: East of Sacramento exit I-80 at the Riverside exit and go north on Riverside (right turn at the end of the off ramp from westbound I-80, take the ramp under the overpass directly onto Riverside from eastbound I-80). Move to the left lane, then turn left on Cirby. Turn left on Vernon (3rd signal light). St. Albans is approximately a mile on the right.

ENTRY FEE: \$15.00; must be postmarked by June 14, 2003. SPECIAL ENTRY: 1st time USCF Scholastic Membership (under age 15) and Entry Fee, \$23.00 OR 1st Time USCF Youth Membership (age 15-19) and Entry Fee \$35.00; must be postmarked by June 14, 2003. Entries postmarked after June 14, 2003, add \$15.00. \$2 CalChess discount available. 1/2 point byes are available to each player and must be requested prior to the close of registration. The Sacramento Chess Club will post advance entries on its website under Weekend Events Info: http://webs.lanset.com/jmclmc/default.htm

SCHEDULE: Check in & on-site registration: June 21, 8:45 am to 9:30 am. Player, parent, and coaches meeting: 9:45 am in the tournament hall. Round 1: 10:00 am; Round 2: 11:30 am; Round 3: 1:15 pm; Round 4: 2:30 pm; Round 5: 3:45 pm. Awards: Following the completion of Round 5. Time control: Game/30.

PRIZES: Individual trophies awarded to at least the top 5 in each section, based on entries. Up to 3 team and 3 club trophies (minimum 2 clubs) will be awarded in each section. The best 4 scores from each team/club will be used and may be adjusted based on entries. Standard USCF tie-breaks will be used to break all ties. Advance entries will be used to determine total number of trophies to be awarded.

OTHER: Bring chess sets and chess clocks! Tournament Director (TD) reserves the right to not pair players from the same school in any or all rounds. Late entries will be given a 1/2 point bye or be paired against another late entry at the TD's discretion. Players in grades 7-12 will be required to keep score. This event is sponsored by the St. Alban's Country Day School and the Sacramento Chess Club. Tournament Director: John McCumiskey, USCF Associate National TD.

FURTHER INFO: John McCumiskey: e-mail: jmclmc@lanset.com Phone: (916) 557-7053 days, (916) 428-5532 eves.

2003 St. Alban's Scholastic Entry Form

Name: _____ Grade: _____ Date of Birth: _____

Address: _____ City, State, Zip: _____

Phone: (____) _____ E-mail: _____ School/Club: _____

USCF ID Number: _____ Expiration Date: _____ Rating: _____

Section: (check one) K - 3rd Grade K - 6th Grade K - 8th Grade K - 12th Grade

_____ Entry Fee (\$15.00 postmarked by 6/14/03)

_____ Special Entry Fee and 1st Time USCF Scholastic Membership (Under age 15) \$23.00; OR

_____ Special Entry Fee and 1st Time USCF Youth Membership (Age 15-19) \$35.00 (postmarked by 6/14/03)

_____ USCF Scholastic Membership (under 15) \$13.00 OR USCF Youth Membership (15 and over) \$25.00

_____ CalChess Discount \$2

_____ Late Entry: postmarked after 6/14/03 or on site (additional \$15)

Requested Byes (if any): _____

_____ TOTAL FEES

NB

Make checks payable to Sacramento Chess Club and mail to 6700 50th Street, Sacramento, CA 95823-1306

Sacramento Chess Club Newsletter, April 2003 - August 2003

P R N B K Q B N R P

7-2 Scholastic Quick Chess. This will be a Game in 10 minutes, 5 round, USCF rated event for Scholastic players only. Registration will be from 6:30-7:10, Round 1 at 7:20 (or so). Entry fee \$2. Trophies for the top 5 finishers. All ties will be broken with tie-breaks listed at the tournament site.

7-4>7-6 Sacramento Chess Championship. See the flyer on page 6 of this newsletter.

7-9 Sacramento Chess Club Speed Chess Championship Finals. An unrated ten-player round-robin with the qualifiers from July 2nd and defending champion Kenan Zildic. Games start at 7:20.

7-9 Sacramento Chess Club Scholastic Speed Chess Championship. This will be the Club's 5 minute scholastic championship. The format will depend on the total number of entries (swiss, double swiss, or round robin). Registration will be from 6:30-7:10, Round 1 at 7:20 (or so). Entry fee \$2. Trophies for the top 5 finishers. All ties will

be broken using standard USCF tie-breaks (trophies to be awarded on July 31 along with the Club Speed Chess Champion).

7/16>8-13 It's Hot Out There! Swiss. 5 Round G/75 USCF rated, entry fee \$5. Early Registration 7/17; 7/24 registration from 6:45-7:10. Round 1 at 7:20 pm, subsequent rounds at 7:15 pm. Trophy to the champion, top 1500-1799, and under 1500 (including unrated). Standard USCF tie-breaks will be used.

8-2 Sacramento Summer Scholastic. See the flyer on page 7 of this newsletter.

8-20>8-27 Williams Gambit Thematic Tournament. See page 1 of the newsletter.

8-23>8-24 Sacramento Chess Club Weekend Swiss #11. See the flyer on page 11 of this newsletter.

Future Events: September – Election of Club officers, Sacramento Chess Club Championship.

USCF Memberships Purchased Through the Sacramento Chess Club: On January 1, 2003, the rates for USCF memberships were increased. Along with that increase, the USCF reinstated the affiliate discount for these memberships. What does this mean to you? The Sacramento Chess Club will continue its policy of returning the affiliate discounts back to our members as long as the membership is purchased on a Club night or is purchased as part of a transaction that would normally occur on a Club night. Memberships purchased in conjunction with a weekend event (i.e. Sacramento Chess Championship) will not receive the affiliate discount. Single year discounted membership rates are as follows: Adult - \$45, Economy Adult (no Chess Life) - \$36, Senior (65 & over) - \$32, Youth (19 & under) - \$23, Scholastic (14 & under) - \$17, Economy Scholastic (14 & under, no Chess Life) - \$12. Multiple year memberships are also available with the discount.

Game & Newsletter Submissions: If you have any games (analysis appreciated but not required) or articles for next issue of the Sacramento Chess Club Newsletter, please submit them to John McCumiskey via e-mail at jmclmc@lanset.com or at the Club. Deadline for the next newsletter is August 2nd. The next newsletter will go out around August 16th.

Send Game Submissions, Newsletter Submissions, or Address Updates and Corrections to: Please send your address updates and/or corrections to John McCumiskey, 6700 50th St., Sacramento, CA 95823-1306 or e-mail jmclmc@lanset.com. Thank you!

2nd Annual Koltanowski Memorial, May 24-26, 2003

Place: The Learning Exchange, 1111 Howe Avenue, Suite 125, Sacramento, CA. From Business 80 (eastbound or westbound), exit at Cal Expo and go east on Exposition Boulevard. Exposition Boulevard will eventually join Arden Way. At Howe Avenue, turn right. The Learning Exchange is about 1/2-mile on the right. From US Highway 50, exit Howe Avenue and go north. The Learning Exchange is about 2-1/2 miles on the left.
Note: The Learning Exchange is at the north end of the 1111 Howe Avenue Business complex.

Event & Schedule: 2 sections: Master/Expert (2000+), Reserve (Under 2000) in a two or three-day schedule. USCF rated six-round swiss. Ratings will be based only on the 04/03 USCF rating list. **Registration:** 5/24 – 8:15 am - 9:30 am. 5/25 – 8:15am - 9:10am. **Rounds:** 3-day: 5/24 – 10 & 3:30, 5/25 – 11 & 5, 5/26 – 10 & 3:30. 2-day: 5/25 – 9:30, 11:45, 2, & 5, 5/26 – 10 & 3:30. (2-day and 3-day events merge in round 4) **Time controls:** 3-day, 30/90 G/1 all rounds. 2-day, Rounds 1-3, G/60; Rounds 4-6, 30/90, G/1. A 5 second time delay will be used on all time controls.

Entry Fees: 3-day: \$50 (Juniors \$30), postmarked by 5/17/2003; \$60 (Juniors \$35) postmarked after 5/17/2003 and on site. 2-day: \$51 (Juniors \$31), postmarked by 5/17/2003; \$61 (Juniors \$36) postmarked after 5/17/2003 and on site. Special entry: 1st time USCF and entry fee \$89 postmarked by 5/17/2003, \$99 postmarked after 5/17/2003 and on site. IMs/GMs free. USCF membership required. CalChess members receive a \$5 discount on their entry fee (excluding reentries). Entrants may play up one section for \$10.
Reentry after round 2 of the 3-day schedule, \$40.

Prizes: Master/Expert: 1st - \$250 & Trophy (guaranteed), 2nd - \$175, U2200*: 1st - \$150, 2nd - \$100
Reserve: 1st - \$250 & Trophy, 2nd - \$175, 1799-1600*, 1st - \$150, 2nd - \$100;
1599-1400*, 1st - \$150, 2nd - \$100; U1400*, 1st - \$150, 2nd - \$100; Junior, 1st - \$70; Unrated, 1st - \$70

Overall prize fund based on 60 full paid adult entries and 10 full paid junior entries. Unrated players ineligible for asterisked (*) prizes. Each section prize (i.e. 1799-1600) must have 5 players or the prize fund and/or number of prizes is subject to change or combination with other sections.

Byes: 1/2 point byes are available in any round rounds, maximum of two 1/2 point byes per entry. Late entries will be given a 1/2 point bye or paired against another late entry at the TD's discretion. Byes for rounds 5 & 6 must be requested by the close of registration for the schedule being played and may not be changed.

Hotels: Best Western Expo Inn, 1413 Howe Avenue, 800-643-4422 or 916-922-9833 (2 blocks)
Comfort Inn, 21 Howe Avenue, 916-379-0400 (2.7 miles from the playing site – near US 50)
Inns of America, 25 Howe Avenue, 916-351-1213 (2.7 miles from the playing site – near US 50)
Motel 6, 7850 College Town, 916-383-8110 (2.4 miles from playing site – near US 50)
Vagabond Executive Inn, 2030 Arden Way, 916-286-2400 (0.8 miles from playing site)

Other: Bring clocks & equipment – none provided! Registration will close as scheduled to allow round 1 to start on time. Late entries will be given a 1/2 point bye or paired against another late entry at the TD's discretion. No computer entries accepted. Wheelchair access to site. USCF rated. Advance entries posted at the Sacramento Chess Club website, <http://webs.lanset.com/jmclmc/default.htm> on the Weekend Events page. The Sacramento Jazz Jubilee will be held that weekend – bring your Jazz fans along for the fun!

More information: ANTD John M^cCumiskey, e-mail: jmclmc@lanset.com; phone: (916) 557-7053 (days), (916) 428-5532 (eves).

2nd Annual Koltanowski Memorial Entry Form

Name: _____ USCF ID # _____ Rating: _____

Address: _____ Expiration Date: _____

City, State & Zip: _____ Phone: (____) _____

Circle the section being entered: Master/Expert Reserve E-mail Address: _____

Mark all that apply: Requested 1/2 point bye (if any): _____

_____ 3-day: \$50 postmarked by 5/17/2003 (Juniors \$30), \$60 postmarked after 5/17/2003 & at site (Juniors \$35)

_____ 2-day: \$51 postmarked by 5/17/2003 (Juniors \$31), \$61 postmarked after 5/17/2003 & at site (Juniors \$36)

_____ USCF Membership: \$49-Adult; \$36-Senior; \$25-Youth (19 & under); \$13-Economy Scholastic (14 & under)

_____ Special entry: 1st time USCF & entry fee \$89 postmarked by 5/17/2003, \$99 after 5/17/2003 & on site

_____ CalChess membership: \$15 year, \$28 two years, \$41 three years, \$13 year (scholastic), \$17 year (family)

_____ Play up one section for \$10

_____ **SUBTOTAL**

_____ CalChess discount \$5

_____ **TOTAL** (Make check payable to Sacramento Chess Club)

Mail entries to: Sacramento Chess Club, c/o 6700 50th Street, Sacramento, CA 95823-1306

ENB

2003 Sacramento Chess Championship, July 4-6, 2003

PLACE: Best Western Expo Inn, 1413 Howe Avenue, Sacramento, CA. From Business 80 (eastbound or westbound), exit at Cal Expo and go east on Exposition Boulevard. Exposition Boulevard will eventually join Arden Way. At Howe Avenue, turn right. The Best Western Expo Inn is approximately ¼-mile on the right. The tournament hall is in the Expo building.

EVENT & SCHEDULE: Three sections: Master/Expert (above 1999), Reserve (1600-1999), and Amateur (U1600) in a two or three-day schedule. USCF rated six-round swiss. Ratings will be based only on the 06/02 USCF rating list. **Registration:** 7/4 – 8:15 am - 9:30 am. 7/5 – 8:15am - 9:10am. **Rounds:** 3-day: 7/4 – 10 & 3:30, 7/5 – 11 & 5, 7/6 – 10 & 3:30. 2-day: 7/5 – 9:30, 11:45, 2, & 5, 7/6 – 10 & 3:30. (2-day and 3-day events merge in round 4) **Time controls:** 3-day, 30/90 G/1 all rounds. 2-day, Rounds 1-3, G/60; Rounds 4-6, 30/90, G/1. A 5 second time delay will be used on all time controls.

ENTRY FEE: 3-day: \$65 (Juniors \$32), postmarked by 6/28/2002; \$75 (Juniors \$37) postmarked after 6/28/2002 and on site. 2-day: \$66 (Juniors \$33), postmarked by 6/28/2002; \$76 (Juniors \$38) postmarked after 6/29/2002 and on site. Special entry: 1st time USCF and entry fee \$100 postmarked by 6/28/2002, \$110 postmarked after 6/29/2002 and on site. IMs/GMs free. USCF membership required. CalChess members receive a \$5 discount on their entry fee (excluding reentries). Entrants may play up one section for \$10. **Reentry** after round 2 of the 3-day schedule, \$40.

BYES: ½ point byes available in any round and must be requested before completion of the previous round. ½ point byes for rounds 5 and 6 must be requested prior to the start of round 1 and may not be changed. Maximum two ½ point byes per entry.

PRIZES: Master/Expert: 1st - \$325 (guaranteed) & trophy, 2nd - \$250 *U2200: 1st - \$185, 2nd - \$150
 Reserve: 1st - \$325 & trophy, 2nd - \$250 *U1800: 1st - \$185, 2nd - \$150
 Amateur: 1st - \$325 & trophy, 2nd - \$250 *U1400: 1st - \$185, 2nd - \$150
 1st Place Junior, \$80 (10 or more Juniors in the section)

Overall prize fund based on 75 full paid adult entries and 10 full paid junior entries. Prize fund and/or number of prizes will be increased or decreased based on total entries in each section (with 60 full paid adult entries and 10 full paid junior entries the prize fund will be \$1,900. **NOTES:** Unrated players ineligible for asterisked (*) prizes. Prizes will be paid out upon the completion of the tournament. Trophy tie-break information on-site.

HOTEL: Best Western Expo Inn (ask for Sacramento Chess Club rates), 1-800-643-4422 or 1-916-922-9833.

CONCESSION: National Chess and Games of Southern California (Jay Blem), featuring the most complete selection of titles and the best prices on books, boards, sets, and clocks in the west.

OTHER: Bring clocks and equipment – none provided!! Registration will close as scheduled to allow round 1 to start on time. Late entries will be given a ½ point bye or paired against another late entry at the TD's discretion. No computer entries accepted. Wheelchair access to site. USCF rated. Advance entries posted at the Sacramento Chess Club website, <http://webs.lanset.com/jmclmc/default.htm> on the Weekend Events page. **More Information:** ANTD John McCumiskey, e-mail: jmclmc@lanset.com; phone: (916) 428-5532.

2003 Sacramento Chess Championship Entry Form

Name: _____ USCF ID # _____ Rating: _____

Address: _____ Expiration Date: _____

City & State: _____ Zip: _____ Phone: (____) _____

E-mail Address: _____ Requested ½ point bye (if any), round(s) _____

Circle the section being entered: Master/Expert Reserve Amateur

Mark all that apply:

_____ 3-day: \$65 postmarked by 6/28/2002 (Juniors \$32), \$75 postmarked after 6/28/2002 & at site (Juniors \$37)

_____ 2-day: \$66 postmarked by 6/28/2002 (Juniors \$33), \$76 postmarked after 6/28/2002 & at site (Juniors \$38)

_____ USCF Membership: \$40, Adult; \$30, Senior; \$25, Youth (19 & under); \$13, Economy Scholastic (14 & under)

_____ Special entry: 1st time USCF & entry fee \$100 postmarked by 6/28/2002, \$110 after 6/28/2002 & on site

_____ CalChess membership: \$15 year, \$28 two years, \$41 three years, \$13 year (scholastic), \$17 year (family)

_____ Play up one section for \$10.

_____ **SUBTOTAL**

_____ CalChess discount \$5

_____ **TOTAL (Make checks payable to Sacramento Chess Club)**

ENB

Mail entries to: Sacramento Chess Club, c/o 6700 50th Street, Sacramento, CA 95823-1306

If you have an e-mail account, do you wish to be notified when the on-line version of the Sacramento Chess Club Newsletter, which includes tournament flyers, is posted on the Sacramento Chess Club Website? (Check one.) **G** Yes **G** No

Sacramento Chess Club Newsletter, April 2003 - August 2003

P R N B K Q B N R P

2003 Sacramento Summer Scholastic, August 2, 2003

SECTIONS: Grades K – 3; Grades K – 6; Grades K – 8, Grades K – 12th Grade. Players in between grade groups during the summer may play in the section of their choice. For example, a student who will be going into 4th grade when school starts can play in the K-3 or K-6 section. 2003 high school graduates may participate as a 12th grader. A team event will be held in each section (a team is a minimum of two students from a school/club in a section, minimum 1 team per event).

LOCATION: Ethel Hart Senior Center, Redwood Room, 915 27th Street, Sacramento. **DIRECTIONS:** *From westbound Interstate 80, take Business 80 into Sacramento:* Exit at E Street and drive parallel to the freeway on 29th Street to I Street and turn right. *From eastbound Interstate 80, take Business 80 into Sacramento; from northbound Highway 99, or westbound US 50, take eastbound Business 80 in Sacramento toward Reno:* Exit at H Street. At the bottom of the ramp, make a sharp left turn and go under the freeway. Turn left on 29th Street, then right on I Street. *From Interstate 5 into Sacramento:* Exit at J Street. Turn left on 27th Street. Street parking only; some metered, some free.

GENERAL INFO: All players must be current members of the United States Chess Federation (USCF). Non-members may join when they send in their entry. The event will be run according to the USCF rule book and any modifications made for scholastic competition.

ENTRY FEE: \$15.00 must be postmarked by July 26, 2003. **SPECIAL ENTRY:** 1st time USCF Scholastic Membership (under age 15) and Entry Fee, \$23.00 **OR** 1st Time USCF Youth Membership (age 15-19) and Entry Fee \$30.00; all must be postmarked by July 26, 2003. For all entries postmarked after July 26, 2003 and on-site, add \$15.00. CalChess member discount, \$2. ½ point byes are available to each player and must be requested prior to the close of registration and check-in time at 9:00 am. The Sacramento Chess Club will post advance entries under the Weekend Events Info portion of it's web site (<http://webs.lanset.com/jmclmc/default.htm>). **Due to space constraints, total entries will be limited to 140 – the website's entry list will be updated every day entries are received.**

SCHEDULE: Check in & on-site registration: August 2, 8:30 am to 9:15 am. **Player, parent, and coaches meeting:** 9:30 am in the tournament hall. **Round 1:** 9:45 am; **Round 2:** 11:15 am; **Round 3:** 1:00 pm; **Round 4:** 2:15 pm; **Round 5:** 3:30 pm. **Awards:** Following the completion of Round 5. **Time control:** Game/30.

PRIZES: Individual trophies awarded to at least the top 5 in each section, based on entries. Up to 3 team and 3 club trophies (minimum 2 clubs) will be awarded in each section. The best 4 scores from each team/club will be used and may be adjusted based on entries. Standard USCF tie-breaks will be used to break all ties. Advance entries will be used to determine total number of trophies to be awarded.

OTHER: Bring chess sets and chess clocks! In the last round, players from the same school/team may face each other to determine individual championships, even if it affects team championship prospects. Late entries will be given a ½ point bye or be paired against another late entry at the Tournament Director's discretion. **Further Info:** Contact Tournament Director John M^cCumiskey: e-mail: jmclmc@lanset.com Phone: (916) 428-5532.

2003 Sacramento Summer Scholastic Entry Form

Name: _____ Grade: _____ Date of Birth: _____

Address: _____ City, State, Zip: _____

Phone: () _____ E-mail: _____ School/Club: _____

USCF ID Number: _____ Expiration Date: _____ Rating: _____

Section: (check one) K – 3rd Grade K – 6th Grade K – 8th Grade K – 12th Grade

ENB

_____ Entry Fee (\$15.00 postmarked by 7/26/03)

_____ Special Entry Fee and 1st Time USCF Scholastic Membership (Under age 15) \$23.00; **OR**

Special Entry Fee and 1st Time USCF Youth Membership (Age 15-19) \$35.00 (postmarked by 7/26/03)

_____ USCF Scholastic Membership (under 15) \$13.00 **OR** USCF Youth Membership (15 and over) \$25.00

_____ CalChess Discount \$2

_____ Late Entry: postmarked after 7/26/03 or on site (additional \$15)

Requested Byes (if any): _____

_____ **TOTAL FEES** checks payable to Sacramento Chess Club & mail to 6700 50th St., Sacramento, CA 95823-1306

Games from Club Events

Michael Aigner annotates one complete game and one endgame from his victory at the Sacramento Chess Club Weekend Swiss #10.

**Michael Aigner - Marc Braverman
Four Knight's Defense**

It was an honor to be paired against one of the persons responsible for my development as a chess player. For several years, I measured my progress in weekly blitz games against Marc and his expert friends. I learned a lot over the years from the many defeats at his hands. Yet these lessons made me the player I am today. Thank you Marc!

1. e4 e5 2. Nf3 Nf6 3. Nc3 Nc6 4. a3!?

This early waiting move forces Black to make a decision as to how to develop his dark squared bishop. The text takes away the preferred b4 square, and **Bc5** fails tactically: 5. **Nxe5!** **Nxe5** 6. d4 **Bd6** 7. f4!

4... Be7 5. d4 exd4 6. Nxd4 d6 7. Nxc6?!

The game has essentially transposed into a Philidor's defense. Although the text weakens Black's pawn structure, preserving the centralized knight is considered superior. White should try **Bb5** or **Be2** instead.

7... bxc6 8. Be2 O-O 9. O-O Nd7

Black wants the c3-f6 diagonal for his bishop, while the knight can choose between e5 and b6, with an eye on jumping to c4.

10. Be3 Bf6 11. Qd2 Qe7 12. Rfe1 Nb6

Not falling for the trap: 12... **Bxc3?** 13. **Qxc3 Qxe4** 14. **Bf3**.

13. Bd4 Be6 14. b3 a5?

This pawn later becomes a target. It was much less vulnerable on its home square.

15. a4 Rfe8 16. f4 Bxd4+ 17. Qxd4 Qh4 18. g3 Qh6 19. Bf3

On the surface, the position is rather quiet and equal. However, Black's weakened pawn structure (complete with two targets: a5 and c6) gives White a significant advantage.

19... Rad8 20. Nd1

Since c3 is the only square to attack both of Black's pawn weaknesses, White vacates this for his queen. The knight will return to the game on e3.

20... c5 21. Qc3 c4 22. Ne3 Qf6?

White can force a clearly better endgame by using his space advantage. After 23. **Qxf6 gxf6** 24. b4! axb4 25. f5 **Bd7** 26. a5 **Na4** 27. **Nd5**, White's knight becomes Black's nightmare. Black should have instead tried activating a rook with the prophelactic **Rb8**.

23. Qxa5? cxb3 24. cxb3 Bxb3 25. Qb4 Bxa4 26. Rxa4 Nxa4 27. Qxa4

Who wins this endgame? I had no idea during the game. White's minor pieces are nice, but black has an extra pawn. In order to win, White needs to trade the queens and play the rook vs bishop and knight endgame. Black, conversely, needs to keep his major pieces and harrass the weakened White king on the second rank.

27... Qc3 28. Qa1 Qxa1?

Black must play **Qc5** or **Qb4**.

29. Rxa1 c6?

Yet another weakening pawn move which costs Black the game. One advantage of having two minor pieces for a rook is that the minor pieces give you twice the opportunities to attack enemy weaknesses. Instead of committing hari kari, Black should immediately trade one of his redundant rooks with **Ra8**. The resulting endgame will be similar to the game, except that Black keeps an extra pawn.

30. Kf2 Ra8 31. Rxa8 Rxa8 32. Nf5!

The double attack (Nxd6 and Ne7+) wins a key pawn.

32... Ra2+ 33. Be2 c5 34. Nxd6 Kf8

White is technically winning, but needs to take some care. For example, he must always make sure the anchor of his kingside pawns (which turns out to be g3) can be defended either by the king or the knight. White's attacking plan is straight forward: overpower the c5 pawn with the knight and the king and then create a passed pawn.

35. Ke3 Ra3+ 36. Bd3 Ke7 37. e5 g6 38. Ke4 Ra4+ 39. Bc4 f6 40. Kd5 fxe5 41. fxe5 Ra1 42. Kxc5

White has achieved his first two objectives in this endgame. Next he turns his attention to the kingside pawns. White really would like to create a second passed pawn so that Black can't play for the bishop and knight mate by sacrificing his rook. Unfortunately for Black, he can't defend both his pawns and protect against the advance of the e-pawn.

42... Re1 43. Kd4 Rh1 44. h4 Rg1 45. Ne4

The knight defends the pawn anchor, giving White's king time to return to the kingside.

45... h6 46. Ke3 g5 47. hxg5 hxg5 48. Bg8 Re1+ 49. Kf3 Rf1+ 50. Kg4 Re1 51. Kf5 Re3 52. g4 Rf3+ 53. Kxg5 Rf8 54. Nf6 Ra8 55. Bd5 Ra5 56. Kg6 Ra1 57. g5 Re1 58. Kf5 Rf1+ 59. Kg4 Re1 60. Kf4 Rf1+ 61. Bf3 Ke6 62. g6 Rg1 63. Bg4+ 1-0

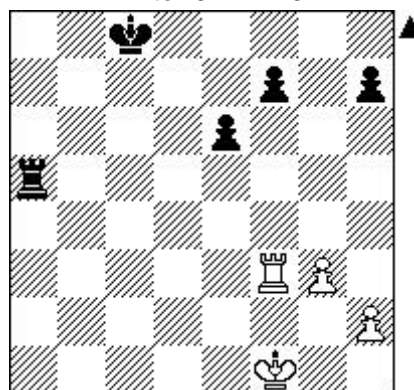
After the game, the peanut gallery was dying to know if I can mate with bishop and knight. I can, but with good endgame technique, that became unnecessary.

K Q q k

Aigner gives an instructive example of when to transpose from a Rook and Pawn endgame into a won Pawn ending.

Larry Snyder - Michael Aigner

After 37. Rxf3



Black to move and win! The goal is to find the most forcing line. The rook endgame with the passed e-pawn is tempting, but White's king is already situated in perfect defensive position in front of the pawns. Hence, White has very significant drawing chances in the rook endgame.

37... Rf5!!

Pawn endgame anyone? Theory states that the player up a pawn in a pawn endgame usually wins. However, one of the exceptions is when the extra pawn is doubled, which will happen after White captures the rook. In order to win, Black's strategy utilizes two pawn endgame concepts: (1) the use of tempo moves to force the enemy king to another square (three times!) and (2) the sacrifice of his extra f-pawn in order to win the opposition.

38. Rxf5 exf5 39. Kf2 Kd7 40. Kf3 Ke6 41. Kf4 Kf6

So far both kings have raced towards the action. Neither wants to surrender control of the g5 square to the other.

42. h3

The only move. 42. h4 h5 43. Kf3 Ke5 44. Ke3 f4+ 45. gxf4+ Kf5 46. Kf3 f6 and the White surrenders

the opposition. Also 42. **Ke3 Kg5** 43. **Kf3 f4** 44. **gxf4+ Kh4** 45. **f5 f6** 46. **Kf4 h6** 47. **Kf3 Kg5** wins the f-pawn.

42... Kg6

Not falling for 42... h5? 43. h4 **Kg6** 44. **Ke5 f6+** 45. **Ke6 Kg7** 46. **Kxf5 Kf7** and a draw. Black alternatively could have played 42... h6 43. **Ke3 Ke5** 44. **Kf3 h5** 45. **Ke3 f4+** 46. **gxf4+ Kd5** 47. **Kd3 f6** 48. **Ke3 f5** 49. **Kd3 h4** with the opposition and a win.

43. Ke3 Kg5 44. Kf3 h6!

The strength of White's 42nd move becomes clear, as 44... f4 which Black would like to play is refuted by 45. **gxf4+ Kf5** 46. **Ke3** and the h-pawn covers the g4 entry square. Hence, Black uses one of his tempo moves.

45. h4+ Kf6 46. Ke3

No better is 48. **Kf4 h5** and the king has to return to the third rank.

46... Ke5 47. Kf3 h5!

Black uses a second tempo move in order to force the White king back to e3. Black is finally ready to deliver the final blow.

48. Ke3 f4+!

The nice part about having an extra pawn is that you can sacrifice it back for a more simple position.

49. gxf4+ Kf5 50. Kf3 f6! 0-1

After a third tempo move, White's king has to move again, allowing Black to penetrate and win one of the pawns and the game.

Sacramento Chess School

Hart Senior Center Redwood Room
915 27th Street, Sacramento, CA

Complete the following three steps to participate:

Step #1: Register at 6 PM

Step #2: Play rated tournament chess game(s) – \$1 entry fee.

Step #3: Lesson presentation (by strong players and masters).

All participants must be USCF members.

2003 Schedule

April 4, 18, 25; May 2, 16, 23, 30; June 6, 20 27; July 18, 25; August 1, 15, 22, 29;
September 5, 19, 26; October 3, 17, 24, 31; November 7, 21; December 5, 12, 19, 26

For more information, contact Mike Parmon, (916) 452-5943, e-mail: michparm@yahoo.com

Sacramento Chess Club Weekend Swiss #11, August 23 & 24, 2003

Place: The Learning Exchange, 1111 Howe Avenue, Suite 125, Sacramento, CA. From Business 80 (eastbound or westbound), exit at Cal Expo and go east on Exposition Boulevard. Exposition Boulevard will eventually join Arden Way. At Howe Avenue, turn right. The Learning Exchange is in the building at the north end of the 1111 Howe Avenue complex, about **b**-mile on the right.

Event & Schedule: 4 round swiss in 3 sections: Master/Expert (2000+), Reserve (1600-1999), Amateur (Under 1600). Registration: 8/23: 8:30-9:30 am. Rounds 8/23 & 8/24: 10:00 am & 3:30 pm. Time controls: 30/90, G/1, 5 second time delay (on applicable clocks).

Entry Fees & Prizes: Entry Fees: \$45 mailed & postmarked by 8/16, \$55 postmarked after 8/16 and on-site; Juniors (under age 19), \$30 mailed and postmarked by 8/16, \$35 postmarked after 8/16 and on-site. IMs/GMs free. Players may play at \$10 per section. \$5 CalChess discount available. Prizes based on 50 adult and 10 Junior paid entries. August 2003 USCF supplement will be used for ratings.

Master/Expert: 1st - \$175 & Trophy (guaranteed), 2nd - \$125 (guaranteed), U2200*: 1st - \$105, 2nd - \$95
Reserve: 1st - \$175 & Trophy, 2nd - \$125, U1800*, 1st - \$105, 2nd - \$95
Amateur: 1st - \$175 & Trophy, 2nd - \$125; U1400*, 1st - \$105, 2nd - \$95; Junior, 1st - \$70

Unrated players ineligible for asterisked (*) prizes. Prize fund and/or number of prizes in any section subject to change based on each sections total of entries.

Hotel: Best Western Expo Inn, 1413 Howe Avenue, 1-800-643-4422 or 1-916-922-9833.

Other: Bring sets & clocks!!! One ½ point bye available all rounds. Late entries will be given a ½ point bye or paired against another late entry at the TD's discretion. Round 3 byes must be requested by 8/23, Round 4 byes must be requested prior to round 1 and may not be changed. Bring your families – the California State Fair will be going on a couple of blocks away! **Contact:** John McCumiskey, Sacramento Chess Club, (916) 428-5532 (days) or jmclmc@lanset.com.

Sacramento Chess Club Weekend Swiss #11 Entry Form

Name: _____ USCF ID # _____ Rating: _____

Address: _____ Expiration Date: _____

City, State & Zip: _____ Phone: (____) _____

Circle the section being entered: Master/Expert Reserve E-mail Address: _____

Mark all that apply: Requested ½ point bye (if any): _____

_____ \$45 postmarked by 8/16/2003 (Juniors \$25), \$55 after 8/16/2003 & on site (Juniors \$30)

_____ USCF Membership: \$40, Adult; \$30, Senior; \$20, Youth (U19); \$13, Scholastic (U15)

_____ CalChess membership: \$15 year, \$28 2-years, \$41 3-years, \$13 year (scholastic), \$17 year (family)

_____ Play up one section for \$10.

_____ **SUBTOTAL**

_____ CalChess discount \$5

_____ **TOTAL (Make checks payable to Sacramento Chess Club)**

Mail entries to: Sacramento Chess Club, c/o 6700 50th Street, Sacramento, CA 95823-1306

ENB

Sacramento Chess Club Newsletter, April 2003 - August 2003

P R N B K Q B N R P

In this issue:	1 st Annual William Gambit Thematic	Page 1
	Club Logo Shirts	Page 1
	E-mail List and Electronic Newsletter	Page 1
	Schedule of Events	Page 2
	2003 St. Albans Scholastic	Page 3
	2 nd Annual Koltanowski Memorial	Page 5
	2003 Sacramento Chess Championship	Page 6
	2003 Sacramento Summer Scholastic	Page 7
	Member Games	Page 8
	Sacramento Chess School	Page 10
	Sacramento Chess Club Weekend Swiss #11	Page 11

Note: Recent Results can be found at <http://webs.lanset.com/jmclmc/default.htm>.

Sacramento Chess Club
j 6700 50th Street
Sacramento, CA 95823-1306